

© 2014 Mazda Motor of America, Inc.

Subject: VEHICLE SPEED DOES NOT INCREASE WITH ENGINE SPEED AND ATX DOES NOT SHIFT UP OR DOWN	Bulletin No: 05-002/14
	Last Issued: 02/14/2014

BULLETIN NOTE

- This bulletin supersedes the previous bulletin 05-008/13, issued on 12/12/13. The APPLICABLE MODEL(S)/VINS has been revised.
- Changes are noted below in Red beside the change bar.

APPLICABLE MODEL(S)/VINS

- 2012-2014 Mazda3 (with SKYACTIV-DRIVE A/T)
- 2013-2014 CX-5 (with SKYACTIV-DRIVE A/T)
- 2014 Mazda6 (with SKYACTIV-DRIVE A/T)

DESCRIPTION

Some vehicles may exhibit the ATX fail-safe function working with the following symptoms:

- The vehicle speed does not increase with engine speed
- The ATX does not shift up or down as expected

The condition may not always be able to be reproduced and DTCs may not be stored when the vehicle is brought in. Foreign material (iron particles in the ATF) may enter the ATX valve body and cause a temporary malfunction of the valve body and/or sensor (ATX fail-safe function activated). The fail-safe function is canceled without DTCs recorded if the malfunction goes away and does not occur again at the next drive cycle.

Fail-safe function operation:

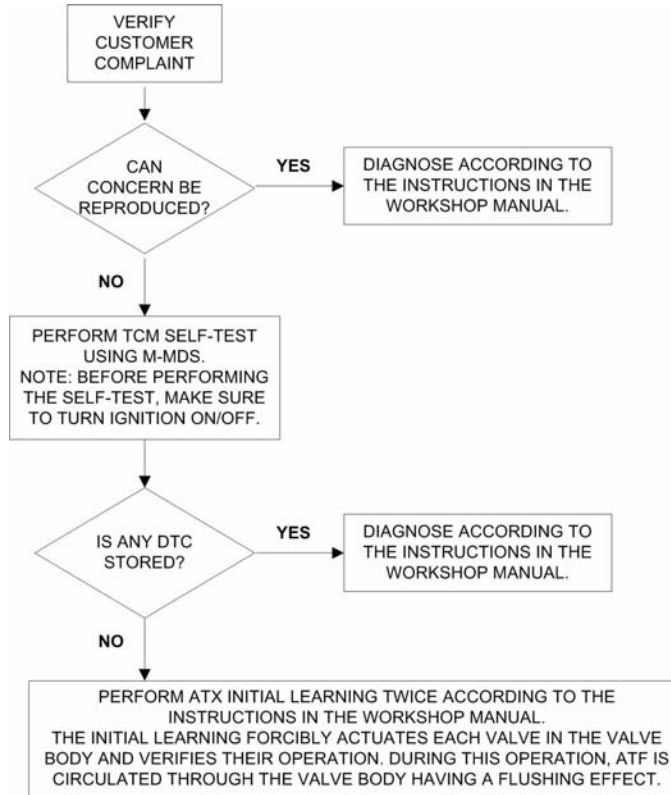
- If a technical fault is detected in the ATX by the malfunction detection function, the fail-safe function limits the ATX control (inhibits some gears or shift down functions).
- Even in case of an ATX malfunction, the fail-safe function allows minimum vehicle driveability.

Customers having this concern should have their vehicle inspected/repared using the following repair procedure.

CONSUMER NOTICE: The information and instructions in this bulletin are intended for use by skilled technicians. Mazda technicians utilize the proper tools/equipment and take training to correctly and safely maintain Mazda vehicles. These instructions should not be performed by "do-it-yourselfers." Customers should not assume this bulletin applies to their vehicle or that their vehicle will develop the described concern. To determine if the information applies, customers should contact their nearest authorized Mazda dealership. Mazda North American Operations reserves the right to alter the specifications and contents of this bulletin without obligation or advance notice. All rights reserved. No part of this bulletin may be reproduced in any form or by any means, electronic or mechanical---including photocopying and recording and the use of any kind of information storage and retrieval system ---without permission in writing.

REPAIR PROCEDURE

1. Verify customer concern.
2. Follow the chart to determine course of action.



3. Verify repair.

WARRANTY INFORMATION

NOTE:

- This warranty information applies only to verified customer complaints on vehicles eligible for warranty repair.
- This repair will be covered under Mazda's Powertrain Limited Warranty term.
- Additional diagnostic time cannot be claimed for this repair.

Warranty Type	A
Symptom Code	27
Damage Code	93
Part Number Main Cause	7777-SP-J23
Quantity	0
Operation Number / Labor Hours:	XXJD9XFX / 0.4 Hrs.